



THE NEW C-CLASS ESTATE



Mercedes-Benz



Refinement in great style

The C-Class Estate – beautifully practical

It is the unrivalled combination of dynamism and spaciousness that makes the new C-Class Estate what it is: an elegant estate that not only exudes sportiness, but also makes sure you feel it. This is where innovative technology and trailblazing design complement each other at the highest level. Enjoy a driving experience of a quite different kind – in this agile and flexible all-rounder. Feel how this exciting car is second to none in rapidly and precisely adapting to the current driving situation and your individual requirements. In addition to its technology, the new C-Class Estate excels with its intelligent load compartment concept, which attaches great

importance to flexibility and user friendliness. Moreover, the wide range of even more powerful engines leaves no wish unanswered. You can also look forward to a noticeably larger interior – plus more atmosphere thanks to a wide choice of high-grade materials and a completely new interior design. All enhanced by the generously dimensioned panoramic sliding roof, which is available as an optional extra. Whether it is to be a sporty or more comfort-oriented variant – the choice is entirely yours. The external appearance of the new C-Class Estate also has many facets – but see for yourself.



Even familiar routes become a new experience

A new definition of driving pleasure

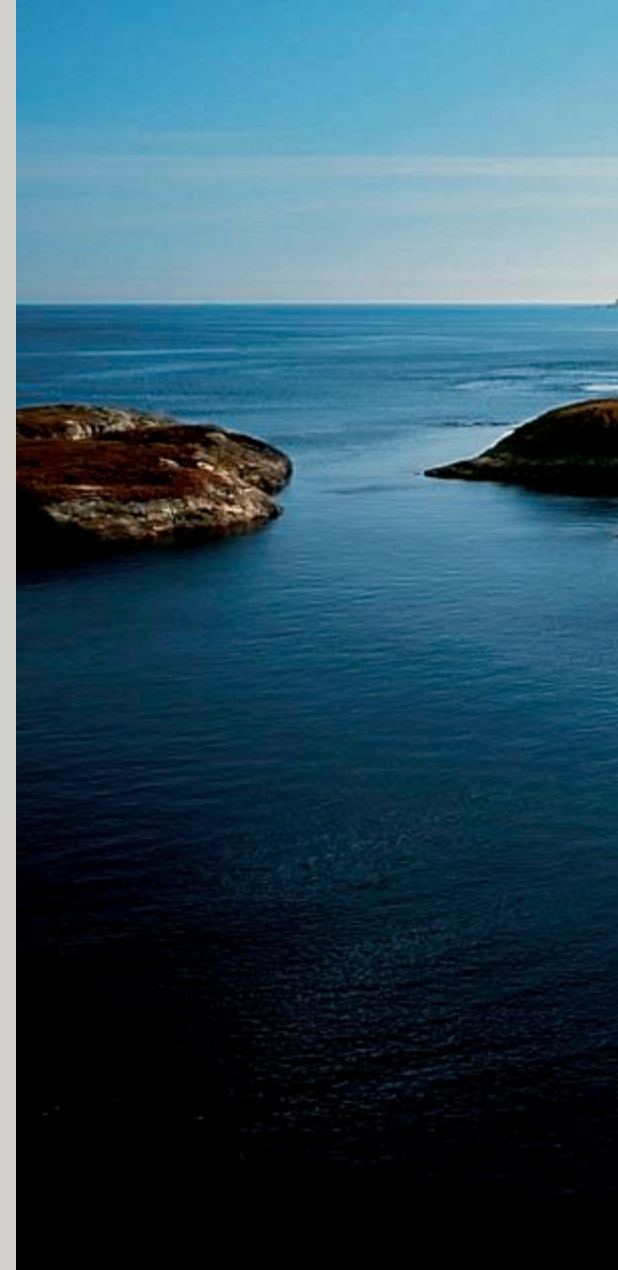
Even in visual terms, the new C-Class Estate leaves no doubt about its ambitions: its muscular contours combined with elegant lines exude serenity, while the front end and impressive track width lend a sporty emphasis. This striking appearance delivers on its promise in every respect, for the new C-Class Estate features technological innovations that ensure exceptional agility. For example the standard AGILITY CONTROL package with its selective damping system. Or the optional, new dynamic handling package with

Sport mode – which enables you to make the handling characteristics particularly sporty or more comfort-oriented at the touch of a button, whenever you please. And for a sure-footed driving experience in almost any weather conditions, the optional 4MATIC four-wheel drive system can be ordered for the model C 320 CDI. This improves road contact on wet surfaces, but also provides noticeably more traction and dynamism in dry conditions.



Dynamic handling package

The dynamic handling package with special Sport mode allows you to match the C-Class to your mood. At the touch of a button the accelerator pedal produces a more direct response, the automatic transmission shift times change and the damper characteristics become more sporty









Great objectives can only be achieved with the right driving force

Tailor-made power packs from 100 kW (136 hp) – 200 kW (272 hp)

Whether you choose a high-torque CDI or lively petrol model, one thing is certain: you will be permanently delighted with the direct, muscular power delivery of your new C-Class Estate.

The C 320 CDI is powered by a 6-cylinder diesel engine with common-rail technology. Developing 165 kW (224 hp), this accelerates the car to 100 km/h in just 7.7 seconds. And owing to numerous new technical features, the two 4-cylinder models C 200 CDI and C 220 CDI now generate even more output and considerably more torque with an even more favourable fuel consumption. Output is now 100 kW (136 hp) and 125 kW (170 hp) respectively. All diesel engines are also naturally equipped with a particulate filter¹ as standard.

Good news if you prefer a petrol engine: here too, the output and torque of the supercharged 4-cylinder engines have been further increased with positive results in terms of fuel consumption. The C 180 KOMPRESSOR now develops 115 kW (156 hp), and the C 200 KOMPRESSOR 135 kW (184 hp). The three 6-cylinder variants are even more sporty, combining a high level of smoothness with powerful acceleration. The C 230 achieves a maximum speed of 230 km/h with its 150 kW (204 hp), while the C 280 generates a convincing 170 kW (231 hp). And with its uncompromising 200 kW (272 hp), the C 350 accelerates from standstill to 100 km/h in only 6.5 seconds. All the V6 models not only excel with very economical fuel consumption, but are also recognisable by their twin exhaust pipes.

¹ Not available in all countries



A photograph of a landscape. In the foreground, there is a field of dry, brownish vegetation. In the middle ground, there is a wooden fence with a metal railing on top. In the background, there are trees and a blue sky with some clouds.

How about more scope for flexibility?

Simply more options

Whether in business or private life, major and minor challenges are a day-to-day occurrence. Drivers who want to be well prepared for any situation therefore have particularly high expectations of their estate car. Naturally this also applies to the variability of the luggage compartment, and this was taken fully into account during the development of the new C-Class Estate. Starting with the practical stowage nets and an especially high load capacity of 485 to 1500 litres – the most generous in this segment – and right up to the EASY-PACK load securing kit. Every detail is intelligently conceived and dedicated to a single purpose: your comfort and convenience.

The new C-Class Estate also excels with a very high payload of up to 530 kg, as well as an impressive maximum trailer load of up to 1800 kg. And should you be on the road with a trailer, you have the additional assurance that the ESP® system can even stabilise trailer combinations effectively. When the trailer coupling is not needed, it can simply be pivoted away. On request, an automatic tailgate and level control cleverly ensure that the day-to-day practicality of this all-rounder is suited to any load.



Still on the way, but already there

The inner values of the new C-Class Estate

You will immediately notice the high-quality fabrics and elegant trim. And on taking your seat behind the wheel, the tried and tested ergonomics will feel just right. You can also look forward to more space than ever before in a C-Class. Everything around you is an invitation to relax and drive. The position of the driver's seat provides plenty of shoulder and elbow room, and the newly developed front seats are equipped with a lumbar support for the driver, as well as an electrically adjustable cushion height and backrest angle. The integral child seats available as an option ensure special comfort for small children.

With all this comfort, it is of course important to ensure that the driver can concentrate fully on the traffic situation. This begins with a clearly laid-out cockpit: for example the newly designed dashboard with all the necessary information directly in your field of vision.

On request you can also enhance the interior with the control and display system COMAND APS. This combines audio settings, telephone operation and a navigation system, the intelligent voice control system LINGUATRONIC and a music server for up to 1000 songs, which is standard. Despite a wider range of functions, its newly developed control concept is as user-friendly as never before. Operation is either via an input array in the centre console or via the controller located in front of the armrest. The integral Bluetooth function also allows safe hands-free operation of a mobile phone. In addition to video and audio DVDs, the DVD drive is also able to play CDs and MP3s.

Winning hand
The armrest is designed in such a way that the controller automatically falls to hand. It offers a particularly fast, easy and intuitive way of adjusting the full range of COMAND APS settings





The front of the C-Class CLASSIC is distinguished by chromed and black trim elements

At the rear, the matt black handle identifies the CLASSIC design and equipment line

The CLASSIC design and equipment line

The C-Class Estate CLASSIC already shows its typical Mercedes-Benz characteristics at first glance: the chrome-plated radiator grille is embellished with the laurel wreath emblem, and the star is mounted on the bonnet. The windows are surmounted by shining chrome frames, and three black louvres accentuate the air intakes at the front end. The foglamps are likewise set in black surrounds. This colour concept is continued via the black roof rail into the rear end, where the tailgate handle is in matt black.

Models from the C 220 CDI and C 200 KOMPRESSOR upwards are equipped as standard with attractive light-alloy wheels (C 200 CDI and C 180 KOMPRESSOR feature steel wheels with hubcaps as standard). The interior, too, retains its classic feel, finished either in black or reef grey. Fine piano-lacquer trim elements are supplemented with high-quality chrome details. The trim elements are also available in burr walnut as an option. The seats are upholstered in black, reef grey, black/beige or black/red Brighton fabric, but can be finished in ARTICO man-made leather as an option. They are defined with large fabric patches featuring horizontal seamlines.



The generous interior has a classic atmosphere



High-grade materials right back to the load compartment



Numerous chrome trim elements lend the front its elegant character



Gleaming chrome is also used for the tailgate handle

The ELEGANCE design and equipment line

The first time you set eyes on your C-Class ELEGANCE is a very special moment. From the star standing on the bonnet, your gaze travels to the fog lamps with their elegant chrome surrounds. More chrome elements can be seen on the bumpers, wings and doors. The waistline trim strip and the polished aluminium roof rail add a particularly stylish highlight to the sides of the new C-Class.

The rear of the C-Class ELEGANCE is distinguishable by the chrome-plated tailgate handle. The appearance of this variant is rounded off by shining light-alloy wheels in a 12-spoke design. Inside, the tone is set by a discreet combination of colours. The Edinburgh fabric is available in black, savanna beige/cashmere beige or reef grey. As an option, the comfortable seats can also be upholstered in ARTICO man-made leather or genuine leather. A leather steering wheel is fitted as standard. The seats have decorative vertical stitching and the trim elements are in fine-grain eucalyptus. The interior can also be trimmed in burr walnut as an option.



Inviting: the comfortable seats in optional reef grey leather



The load compartment is no less elegant in design



Striking and powerful: the new face of the AVANTGARDE line



Embellishments at the rear include a chrome strip on the apron and a chrome tailgate handle

The AVANTGARDE design and equipment line

An avantgardist is different from the others – and the C-Class AVANTGARDE is no exception in this respect. Even the front end already suggests agility: the visually wide radiator grille with its three brilliant silver louvres and striking chrome strips is embellished by a centrally located Mercedes star in its centre. The flanks of the C-Class are enhanced with various chrome trim features, e.g. on the bumpers, wings and doors. Other eye-catching features include the waistline trim strip and the polished aluminium roof rail as well as the chrome tailgate handle and the continuous chrome strip around the entire vehicle. The interior is characterised by sporty contrasts. The flooring and dashboard are in black, while the centre

door panels and door armrests are in black or reef grey. For models with a leather interior, the seats and door centre panels can be given a special colour contrast in sahara beige or cognac brown on request. The cool sportiness of the interior is accentuated by finely structured aluminium trim, with wood trim in black bird's-eye maple available as an option. The seats feature horizontal stitching, and are upholstered with a combination of Liverpool fabric and ARTICO man-made leather in black or reef grey as standard. A striking leather interior in a combination of black, sahara beige, cognac brown and reef grey is also available.



The horizontal stitching gives the seats a wider appearance



The sportiness of this line extends right into the load compartment



Muscular: the AMG front apron



Dynamic: 17-inch AMG light-alloy wheels and large, perforated brake discs

The AMG sports package

We offer you a particularly attractive package to further enhance the sporty design of the C-Class: the AMG sports package with a dynamic AMG front apron, side skirts, a prominent AMG rear apron and 17-inch AMG light-alloy wheels in a 6 twin-spoke design shod with mixed tyres in size 225/45 at the front and 245/40 at the rear. 18-inch AMG light-alloy wheel in a 5 twin-spoke design are available on request. Driving pleasure is actively enhanced by a 15 mm lower sports suspension, as well as by the speed-sensitive sports steering, perforated brake discs and front brake callipers with Mercedes-Benz lettering. The AMG sports package also ensures a special atmosphere in

the interior: the sports seats provide outstanding support, and like the rear seats they are upholstered in Liverpool fabric/ARTICO man-made leather. A leather interior is also available on request. The AMG sports package also includes a sporty 3-spoke steering wheel which enables you to change gear with gearshift paddles if you have specified an automatic transmission. A sports pedal cluster in brushed stainless steel, black floor mats with AMG lettering, a black roof liner and a shift lever in aluminium decor provide further striking highlights.



From fast cornering to long trips, you can count on the sports seats for perfect support



Small details count: the 3-spoke steering wheel and stainless-steel pedals with rubber studs



Flexible down to the last detail. The load compartment concept

The load compartment of the new C-Class Estate has become more generous in every respect. Whether in terms of load capacity, maximum width, overall height or cubic cross-section, there is now more room than ever before. The possibilities range from 485 to 1500 litres. The load compartment also excels with numerous intelligent details such as the optional load compartment management system. The EASY-PACK securing kit enables you to secure your luggage quickly and easily. At the same time the familiar side-mounted luggage net, the combined luggage cover and retaining net, the retractable bag hooks and the chrome load securing rings ensure that

you are ready for any eventuality. And when it comes to carrying very bulky items, the asymmetrically divided rear seat unit provides even more scope. Simply folding down the appropriate section extends the loading area just as it suits you. In addition, the chrome release handle for the load compartment floor provides access to even more stowage space. And if both your hands happen to be full, the optional EASY-PACK tailgate helps by doing the opening and closing for you. So as you see, whatever happens – you are well prepared.



The load compartment has a capacity of up to 1500 litres with the rear seat backrest folded



Intelligent solutions down to the last detail: the load compartment management system

STANDARD EQUIPMENT (SELECTION)

3-point seat belts and head restraints for all seats

6-speed manual transmission¹

Adaptive brake lights

ADAPTIVE BRAKE with ABS, ASR, brake drying function and hill start assist

AGILITY CONTROL gearshift

AGILITY CONTROL steering

AGILITY CONTROL suspension with selective damping system

Airbags (front), sidebags (front) and windowbags

ASSYST service interval indicator

Belt tensioners with belt force limiters, front and outer rear seats

Brake Assist (ABS)

Chrome load securing rings

Clear-lens fog lamps

Clear-lens headlamps with projector-beam technology

Electronic Stability Program (ESP®)

Front and rear armrests, each with stowage compartment

Front seats with electrically adjustable height and backrest angle

Headlamp Assist

Kneebag for driver (only for Europe)

Luggage nets for the side of the boot

Multifunction steering wheel with trip computer

Outside temperature display

Power windows (4), with one-touch control

THERMATIC 2-zone automatic climate control

¹ 7-speed automatic transmission 7G-TRONIC fitted as standard in the C 320 CDI 4MATIC and the C 350



Integrated child seat (optional)



Rear roller blind (optional)

<i>OPTIONAL EXTRAS (SELECTION)</i>	<i>C200 CDI</i>	<i>C220 CDI</i>	<i>C320 CDI</i>	<i>C320 CDI 4MATIC</i>	<i>C180 KOMPRESSOR</i>	<i>C200 KOMPRESSOR</i>	<i>C230</i>	<i>C280</i>	<i>C350</i>
5-speed automatic transmission	●	●	–	–	●	●	–	–	–
7G-TRONIC 7-speed automatic transmission	–	–	●	□	–	–	●	●	□
AMG sports package	●	●	●	●	●	●	●	●	●
COMAND APS control and display system with DVD drive	●	●	●	●	●	●	●	●	●
Dynamic handling package	●	●	●	–	●	●	●	●	●
EASY-PACK load-securing kit	●	●	●	●	●	●	●	●	●
EASY-PACK tailgate	●	●	●	●	●	●	●	●	●
Integrated child seats (incl. an additional lateral support headrest)	●	●	●	●	●	●	●	●	●
Panoramic sliding sunroof with electric roller blinds	●	●	●	●	●	●	●	●	●
PARKTRONIC	●	●	●	●	●	●	●	●	●
PRE-SAFE®	●	●	●	●	●	●	●	●	●
Roller sunblinds in the rear doors	●	●	●	●	●	●	●	●	●
THERMOTRONIC 3-zone luxury automatic climate control	●	●	●	●	●	●	●	●	●
Trailer coupling incl. stabiliser	●	●	●	●	●	●	●	●	●

● Optional □ Standard equipment – Not available



Panoramic glass sliding sunroof (optional)



EASY-PACK tailgate (optional)

Few things are as difficult as deciding between attractive alloys

Light-alloy wheels

The CLASSIC design and equipment line features 16-inch 7-spoke light-alloy wheels (C 200 CDI and C 180 KOMPRESSOR fitted with steel wheels and wheel trims). The ELEGANCE line features 16 or 17-inch light-alloy wheels as standard, depending on the model. Both have a 12-spoke design. The AVANTGARDE line is supplied with particularly sporty 17-inch 5-twin-spoke wheels.

A 16-inch 7-spoke light-alloy wheel, a 17-inch multi-spoke light-alloy wheel, a 17-inch 5-spoke light-alloy wheel and a 17-inch 7 twin-spoke light-alloy wheel are available on request. The AMG sports package includes 17-inch 6 twin-spoke light-alloy wheels. For a particularly sporty touch, optional 18-inch 5 twin-spoke AMG light-alloy wheels are available. The accessory range also has a choice of exclusive incenio light-alloy wheels – the example shown here is the “Pulaha” designer wheel in a 5 twin-spoke design.



16-inch 7-spoke light-alloy wheel (CLASSIC)



16-inch 12-spoke light-alloy wheel (ELEGANCE)



17-inch 5-twin-spoke light-alloy wheel (AVANTGARDE)



16-inch 7-spoke light-alloy wheel



17-inch multi-spoke light-alloy wheel



17-inch 5-spoke light-alloy wheel



17-inch 7 twin-spoke light-alloy wheel



17-inch 6 twin-spoke AMG light-alloy wheel
(AMG sports package)



18-inch 5-twin-spoke AMG light-alloy wheels



18-inch "Pulaha" 5-twin-spoke incenio designer wheel

The C-Class is very well protected because the paint developed by Mercedes-Benz is very resistant, and is characterised by a durable sheen which is highly intense. Both metallic and non-metallic paint finishes benefit from the scratch resistance of this clearcoat which makes them less susceptible to the effects of the weather and environmental conditions such as precipitation, sunlight, temperature variations, dust and soot.

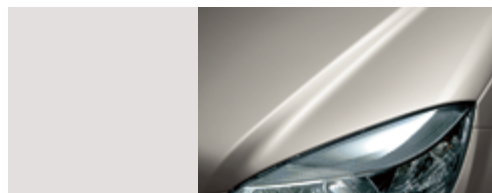
NON-METALLIC PAINT



040 black



590 fire opal



650 calcite white

METALLIC PAINT



197 obsidian black

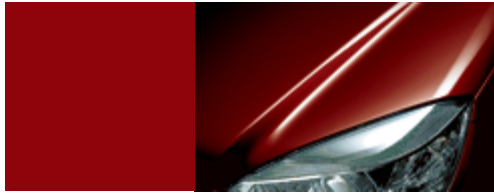


300 periclase green



359 tanzanite blue

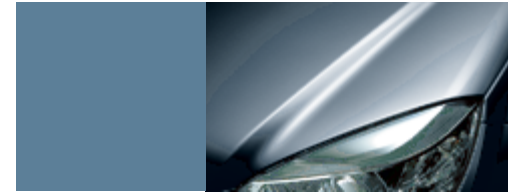
SPECIAL PAINT



544 carneol red



775 iridium silver



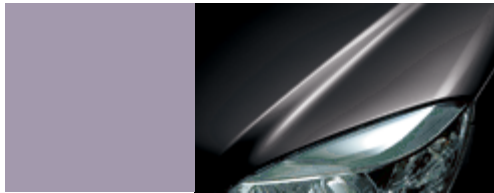
792 palladium silver



723 cubanite silver



798 sanidine beige



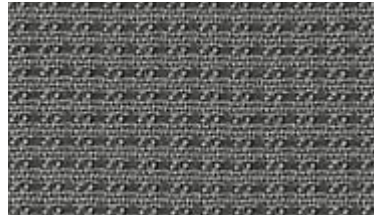
755 tenorite grey

The seats of a Mercedes-Benz excel with a particularly high level of comfort. This is due to the special seat cushion springs and the cleverly conceived divisions between the foam areas between the centre panels of the seat cushion and the flanks. Acting together with the ideally suited upholstery support, the seat cushion springing is precisely configured for the vehicle in question and provides outstanding vibration and damping characteristics. The seats are then upholstered in your own, personal choice of fabrics or leather. New fabric designs have been created for the new C-Class which harmoniously complement the individual design and equipment lines.

**CLASSIC
BRIGHTON FABRIC**



001 black



008 reef grey



055 black / beige



057 black / red

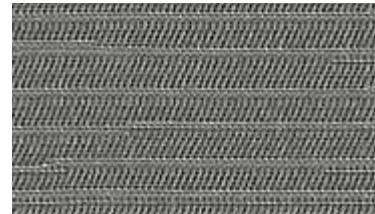
**ELEGANCE
EDINBURGH FABRIC**



401 black

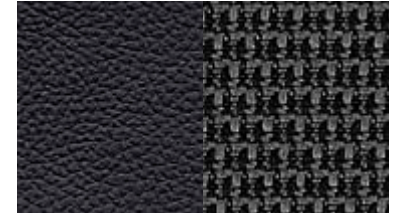


404 savanna beige / cashmere beige

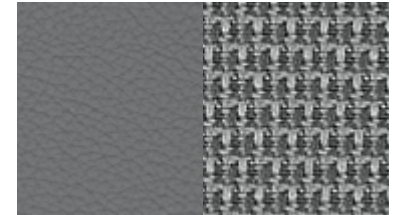


408 reef grey

**AVANTGARDE and AMG sports
package, LIVERPOOL FABRIC/
ARTICO MAN-MADE LEATHER**



701 black



708 reef grey

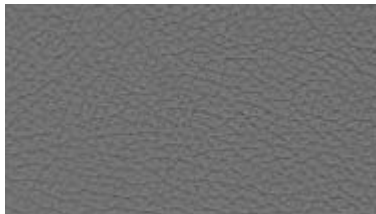
CLASSIC and ELEGANCE
ARTICO MAN-MADE LEATHER



101 black



104 savanna beige /cashmere beige
(for ELEGANCE only)



108 reef grey

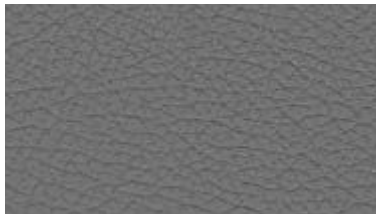
ELEGANCE, AVANTGARDE and
AMG¹ sports package
LEATHER



201 black

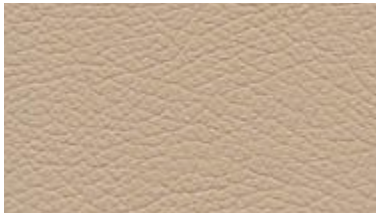


204 savanna beige /cashmere beige
(for ELEGANCE only)

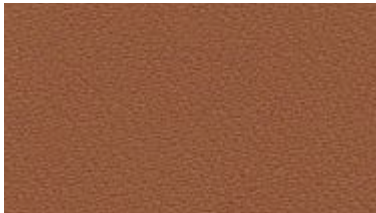


208 reef grey

AVANTGARDE
LEATHER



205 black /sahara beige



207 black /cognac brown

¹Leather interior only available in conjunction with ELEGANCE and AVANTGARDE in black and reef grey

Many hours of work go into every Mercedes-Benz, and the wood trim is a good example: it takes around three weeks to turn the natural product into part of a Mercedes. Special computer-controlled planing machines slice the thinnest of veneers from the wood. The ones whose colour and grain characteristics match best are then used to create a complete veneer. This process involves placing the individual layers on thin substrate elements with intermediate layers of aluminium and glue sheets to ensure strength and durability. Up to 100 of these layers are applied by hand to create a trim strip. Take a close look at your new C-Class and you will see how much care has gone into every detail.

CLASSIC



Piano-lacquer-look finish



Burr walnut

ELEGANCE



Eucalyptus



Burr walnut

AVANTGARDE



Aluminium



Black bird's-eye maple

	Brighton fabric (CLASSIC)				Edinburgh fabric (ELEGANCE)			Liverpool fabric / ARTICO man-made leather (AVANTGARDE and AMG sports package)		ARTICO man-made leather (CLASSIC, ELEGANCE)			Leather (ELEGANCE, AVANTGARDE and AMG sports package)			Leather (AVANTGARDE)	
	black	reef grey	black/beige	black/red	black	savanna beige/cashmere beige	reef grey	black	reef grey	black	savanna beige/cashmere beige ¹	reef grey	black	savanna beige/cashmere beige ¹	reef grey	black/sahara beige	black/cognac brown

NON-METALLIC PAINT

black	●	●	●	●	●	●	●	●	●	●	●	●	●	●	●	●	●
fire opal	●	○	△	○	●	○	○	●	○	●	○	○	●	○	○	○	△
calcite white	●	●	△	●	●	○	●	●	●	●	○	●	●	○	●	○	●

METALLIC PAINT

obsidian black	●	●	●	●	●	●	●	●	●	●	●	●	●	●	●	●	●
periclase green	●	○	△	△	●	●	○	●	○	●	●	○	●	●	○	○	△
tanzanite blue	●	●	△	○	●	○	●	●	●	●	○	●	●	○	●	●	○
carneol red	●	●	○	●	●	●	●	●	●	●	●	●	●	●	●	●	△
cubanite silver	●	○	○	○	●	△	○	●	○	●	△	○	●	△	○	○	●
tenorite grey	●	●	△	△	●	△	●	●	●	●	△	●	●	△	●	○	△
iridium silver	●	●	△	●	●	△	●	●	●	●	△	●	●	△	●	△	●
sanidine beige	●	△	●	△	●	●	△	●	△	●	●	△	●	●	△	●	○

SPECIAL PAINT

palladium silver	●	○	△	△	●	△	○	●	○	●	△	○	●	△	○	△	○
------------------	---	---	---	---	---	---	---	---	---	---	---	---	---	---	---	---	---

● Recommended ○ Possible △ Not recommended

¹For ELEGANCE only

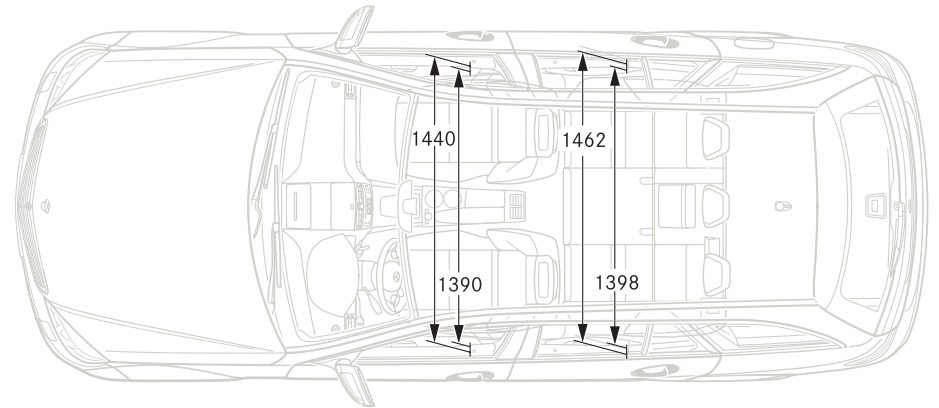
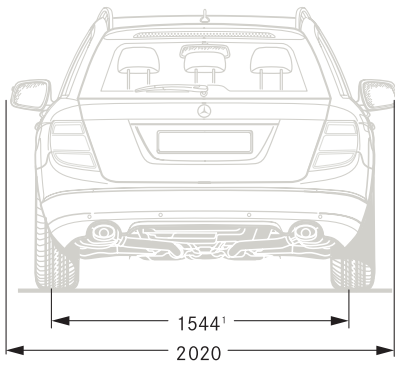
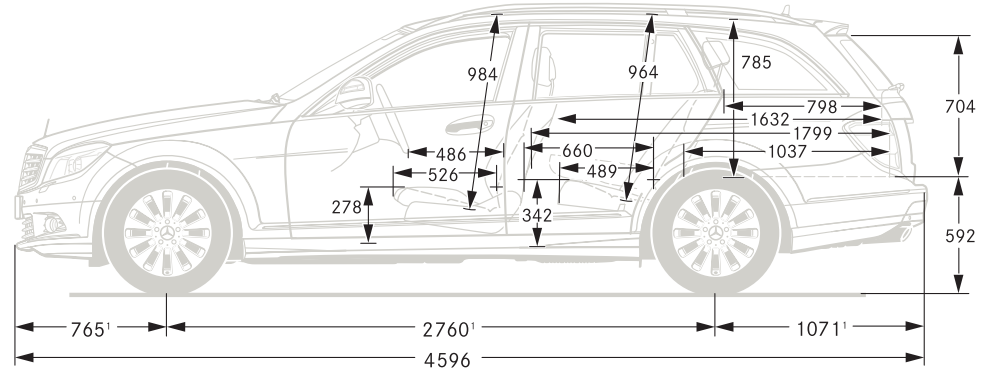
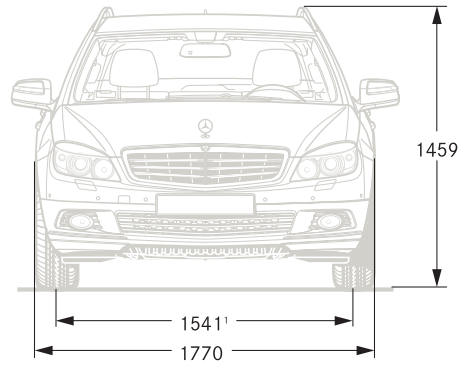
	<i>C 200 CDI</i>	<i>C 220 CDI</i>	<i>C 320 CDI</i>	<i>C 320 CDI 4MATIC</i>
No and arrangement of cylinders	4/in-line	4/in-line	6/V	6/V
Total displacement (cc)	2148	2148	2987	2987
Rated output ¹ (kW at rpm)	100/3800	125/3800	165/3800	165/3800
Rated torque ¹ (Nm at rpm)	270/1600–3000	400/2000	510/1600–2800	510/1600–2800
Compression ratio	17.5	17.5	17.7	17.7
Acceleration ² from 0 to 100 km/h (s) (automatic transmission)	10.7 (10.5)	8.7 (8.6)	7.8 (7.1)	– (7.1)
Top speed ² , approx (km/h) (automatic transmission)	208 (204)	224 (220)	245 (244)	– (244)
Tyre size				
Front	205/55 R 16	205/55 R 16	225/45 R 17	225/45 R 17
Rear	205/55 R 16	205/55 R 16	225/45 R 17	225/45 R 17
Fuel	Diesel	Diesel	Diesel	Diesel
Fuel consumption ^{2,4} (l/100 km)				
urban (automatic transmission)	8.3–8.4 (9.1–9.2)	8.4–8.5 (9.2–9.3)	9.7–10.7 (10.4–10.8)	– (10.7–11.1)
extra-urban (automatic transmission)	4.9–5.0 (5.4–5.5)	5.0–5.1 (5.5–5.6)	5.6–6.1 (5.8–6.0)	– (6.1–6.3)
combined (automatic transmission)	6.0–6.1 (6.7–6.8)	6.1–6.2 (6.8–6.9)	7.1–7.8 (7.5–7.8)	– (7.8–8.1)
CO ₂ emissions ^{2,4} (g/km), combined (automatic transmission)	159 (178)	160 (180)	188 (199)	– (207)
Tank capacity (l)/incl approx reserve	66/8	66/8	66/8	66/8
Boot capacity (l)	485	485	485	485
Turning circle diameter (m)	10.84	10.84	10.84	10.84
Kerb weight ⁵ (kg) (automatic transmission)	1605 (1615)	1630 (1650)	1750 (1750)	– (1810)
Permissible gross vehicle weight (kg) (automatic transmission)	2135 (2145)	2160 (2180)	2280 (2280)	– (2340)

C 180 KOMPRESSOR	C 200 KOMPRESSOR	C 230	C 280	C 350
4/in-line	4/in-line	6/V	6/V	6/V
1796	1796	2496	2996	3498
115/5200	135/5500	150/6100	170/6000	200/6000
230/2800-4600	250/2800-5000	245/2900-5500	300/2500-5000	350/2400-5000
9.3	8.5	11.4	11.3	10.7
9.7 (9.9)	8.8 (9.0)	8.6 (8.9)	7.5 (7.4)	- (6.5)
218 (215)	230 (225)	230 (230)	242 (240)	- (250) ³
205/55 R 16 205/55 R 16	205/55 R 16 205/55 R 16	205/55 R 16 205/55 R 16	205/55 R 16 205/55 R 16	225/45 R 17 225/45 R 17
Super	Super	Super	Super	Super
11.1-11.3 (11.6-11.7) 5.9-6.0 (6.2-6.3) 7.7-7.9 (8.1-8.3)	11.1-11.3 (11.7-11.9) 5.9-6.0 (5.9-6.0) 7.8-8.0 (8.1-8.3)	13.3-13.5 (13.2-13.4) 7.0-7.2 (7.1-7.3) 9.3-9.5 (9.3-9.5)	13.5-13.7 (13.2-13.4) 7.1-7.3 (7.2-7.4) 9.4-9.6 (9.4-9.6)	- (13.9-14.2) - (7.5-7.8) - (9.9-10.2)
185 (194)	187 (194)	223 (223)	226 (226)	- (237)
66/8	66/8	66/8	66/8	66/8
485	485	485	485	485
10.84	10.84	10.84	10.84	10.84
1535 (1550)	1540 (1555)	1585 (1605)	1600 (1615)	- (1655)
2065 (2080)	2070 (2085)	2115 (2135)	2130 (2145)	- (2185)

¹ Figures according to Directive 80/1269/EEC in the currently applicable version ² Provisional figures ³ Electronically governed

⁴ The figures shown were obtained in accordance with the prescribed measuring process (Directive 80/1268/EEC in the currently applicable version).
The figures are not based on an individual vehicle and do not constitute part of the product offer; they are provided solely for purposes of comparison between different vehicle models

⁵ Figures according to Directive 92/21/EC, version 95/48/EC (kerb weight with fuel tank 90 % full, driver, 68 kg, and luggage, 7 kg) for standard-specification vehicles.
Optional extras and accessories will generally increase this figure and reduce the payload capacity accordingly



All measurements in millimetres. The dimensions shown are mean values and apply to standard-specification, unladen vehicles

¹ Carrying 3 people, each weighing 68 kg

Convinced? Now prepare to be seduced: experience the new C-Class Estate at first hand.

Like all our models, the new C-Class Estate offers the unique Mercedes driving experience. It's something that's communicated by even the smallest details, such as the feel of the indicator control or the solid, reassuring way the doors close. But a brochure can never describe an exterior paint

finish, leather upholstery or wood trim element as invitingly as it looks or feels. So experience the new C-Class Estate live. You can use the dealership search function at www.mercedes-benz.de to locate your nearest Mercedes-Benz dealer.



Take-back of end-of-life vehicles. Coming full circle

At the end of its long life, you can return your C-Class to us for environment-friendly disposal in accordance with the EC End-Of-Life Vehicle Directive¹. But that day lies a long way off.

¹Applies in accordance with national regulations to vehicles up to 3.5 tonnes gross weight. Mercedes-Benz passenger cars have met the statutory regulations governing the suitability of their design for reuse and recycling for a number of years now. A network of vehicle take-back depots and dismantlers has been established which will process your vehicle in an environment-friendly manner. The ways in which both vehicles and parts can be recovered are subject to ongoing development and improvement. Consequently, the C-Class will be able to comply with any future increases in the recycling quota within the stipulated time limits. Further information is available at www.mercedes-benz.de or by calling 00800 1 777 7777.

Please note: changes may have been made to the products since this brochure went to press (31.05.2007). The manufacturer reserves the right to make changes to the design, form, colour and specification during the delivery period, provided these changes, while taking into account the interests of the vendor, can be deemed reasonable with respect to the purchaser. Where the vendor or the manufacturer uses symbols or numbers to describe an order or the subject of an order, no rights may be derived solely from these. The illustrations may show accessories and items of optional equipment which are not part of standard specification. Colours may differ slightly from those shown in the brochure, owing to the limitations of the printing process. This brochure has been compiled by DaimlerChrysler AG of Germany and is distributed internationally. It provides a general indication of the range of models, features, optional extras and/or colours available in various countries. Some of the models, features, optional extras and/or colours shown may not be available in your country or may only be available in a different specification. Additionally some models, features, optional extras and/or colours may only be available in combination with others. For current and more specific information in relation to the range of models, features, optional extras and/or colours available in your country, and their pricing, you should contact your nearest authorised Mercedes-Benz Passenger Car Dealer.